



# THE HONG KONG SOCIETY OF COMMUNITY MEDICINE

### Table of content:

|   |   |
|---|---|
| Annual General Meeting cum Annual Dinner in December                  | 1 |
| Last academic meeting in September on Vector Survey Methodology       | 1 |
| Coming academic meetings in November with WHO health promotion expert | 2 |

## Annual General Meeting cum Annual Dinner

Our Annual General Meeting cum Annual Dinner will be held on 1 December 2006. Please join us in the AGM to review of our work in 2005-06 and help electing the new council. Our annual dinner will follow right after the AGM. We are going have delicious food, funny games and plenty of presents for lucky draw !

**Annual General Meeting**  
Time: 6:45 pm to 7:15 pm  
**Annual Dinner**  
Time: 7:15 pm to 9:30 pm

**Venue:**  
Yat Tung Heen (逸東軒)  
2/F, Great Eagle Centre,  
23 Harbour Road, Wanchai, Hong Kong  
*Free Parking is available*

*For reservation, please contact Dr. Janet KWAN (2149 5161) or Dr. Cian CHOW (97735313), or by email to [hkscm\\_enquiry@yahoo.com.hk](mailto:hkscm_enquiry@yahoo.com.hk)*

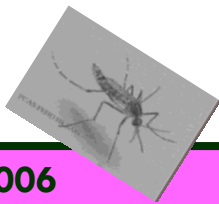
### Last Academic meeting on 13 December 2006



Mr. Thomas LEE



**Mr. Thomas LEE**  
Head (Risk Assessment Unit),  
Pest Control Advisory Section,  
Food and Environmental Hygiene Department  
has shared with us various vector survey methodologies in both local and oversea settings.



Next Academic Meeting

13 Dec 2006

Next Academic meeting on 13 December 2006

# People Places Health

Dr. K C TANG

Senior Professional Officer

Speaker : Health Promotion Unit  
Department of Chronic Diseases and Health Promotion  
World Health Organization

Date : 13 December 2006 (Wednesday)

Time : 6:15 – 7:15 pm

Venue : Lecture Hall  
4/F, Argyle Street Jockey Club School Dental Clinic,  
147J Argyle Street, Kowloon

CME :  
•1 CME point accredited by Hong Kong College of Community Medicine  
•1 CME point accredited by Hong Kong College of Family Physicians  
•1 CME point for doctors who are not taking CME programme for specialists and have registered with one of the CME programme administrators (Department of Health, Hong Kong Academy of Medicine, Hong Kong Doctors Union Ltd. or Hong Kong Medical Association)

**New !!**

•1 CNE point accredited by the Nursing Council of Hong Kong



Thank you for your support on our society!  
Hope to see you all in our functions in 2006-07!